

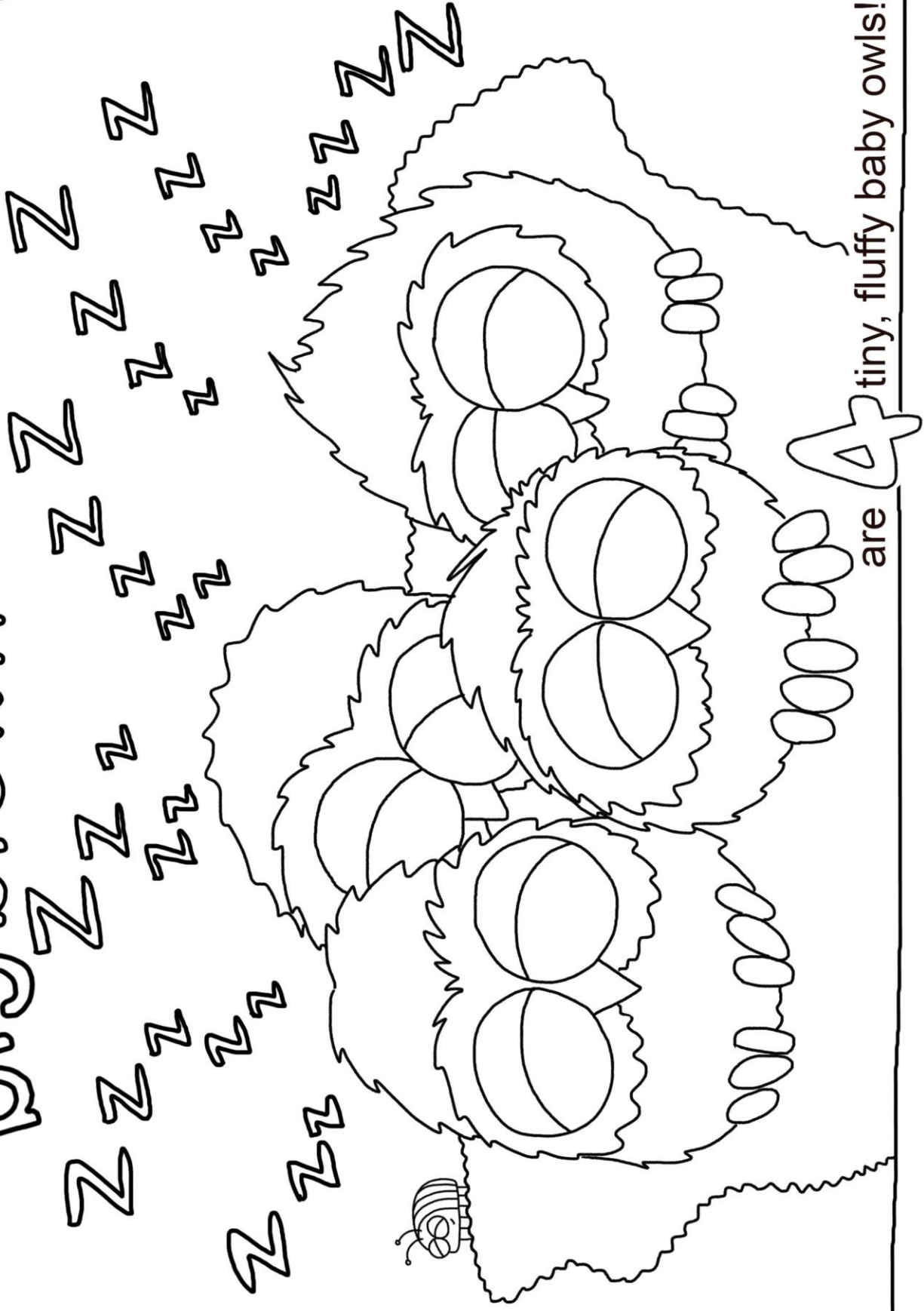




big brown

oak tree

Inside the



A tiny, fluffy baby owl!

are

Elephant pulls on her

Shiny
PURPLE
boots



that are so good for

j u m p i n g



Bone anchored
hearing device
(commonly known as
a BAHA)



Cochlear
implant



Hearing aid



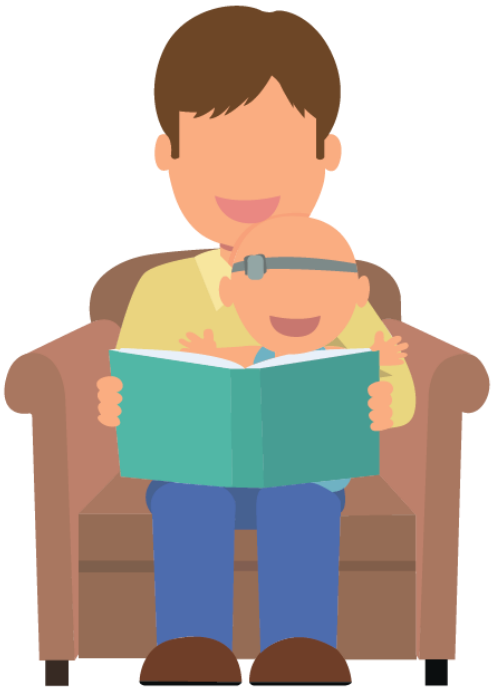
Radio aid



No
technology

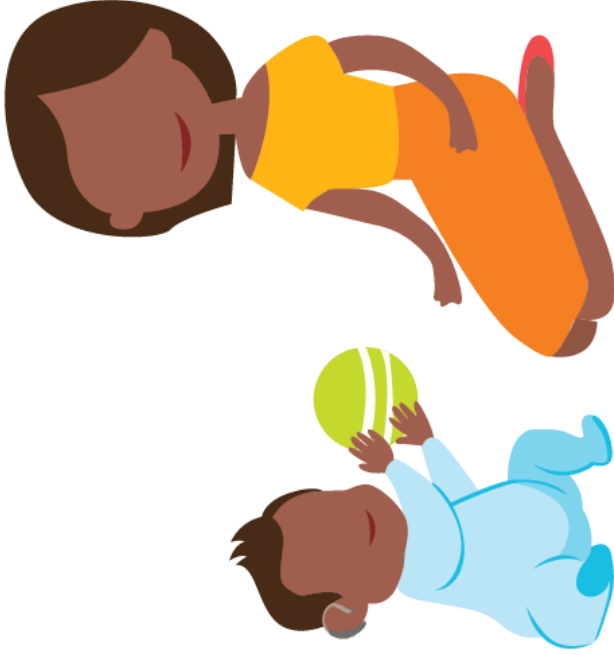


I use sign
language





Where are
your shoes?







Find out how I like
to communicate



Get my attention
before you start
speaking



Include me in the
conversation



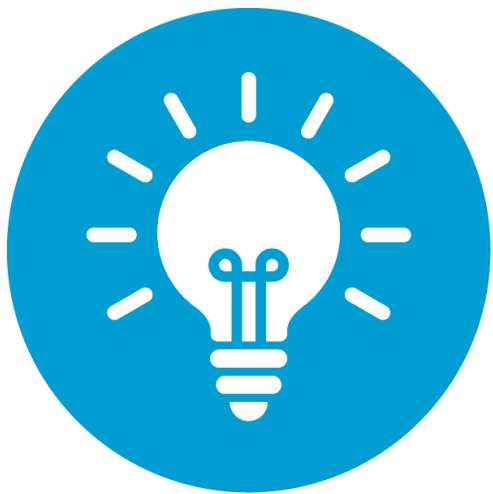
Make sure I can
see your face



Reduce
background noise



Sign or use
gestures



Use bright lighting



Speak clearly